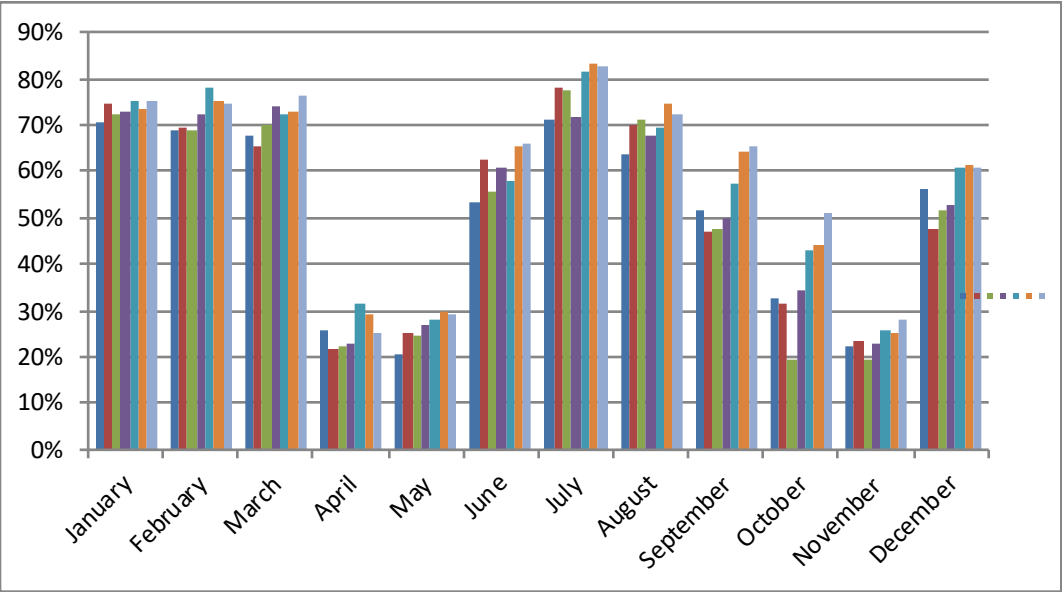


Chamber Resort Associ
Historical Monthly Occup

	<u>2011</u>	<u>2012</u>	<u>2013</u>	<u>2014</u>	<u>2015</u>	<u>2016</u>	<u>2017</u>	<u>2018</u>	<u>2019</u>
January	71%	74%	72%	73%	75%	74%	75%	75%	75%
February	69%	70%	69%	72%	78%	75%	74%	75%	79%
March	68%	65%	70%	74%	73%	73%	76%	74%	79%
April	26%	22%	22%	23%	31%	29%	25%	30%	41%
May	20%	25%	24%	27%	28%	30%	29%	39%	38%
June	53%	62%	55%	61%	58%	65%	66%	68%	63%
July	71%	78%	77%	72%	82%	83%	83%	80%	81%
August	64%	70%	71%	68%	69%	75%	72%	73%	75%
September	52%	47%	48%	50%	57%	64%	65%	64%	61%
October	33%	32%	19%	34%	43%	44%	51%	45%	46%
November	22%	23%	19%	23%	26%	25%	28%	32%	30%
December	56%	48%	52%	53%	61%	62%	61%	61%	63%
AVERAGE	50%	51%	50%	52%	57%	58%	59%	60%	61%
Winter Avg.	64%	66%	65%	68%	69%	70%	72%	71%	73%
Summer Avg.	60%	64%	63%	63%	66%	72%	72%	71%	70%

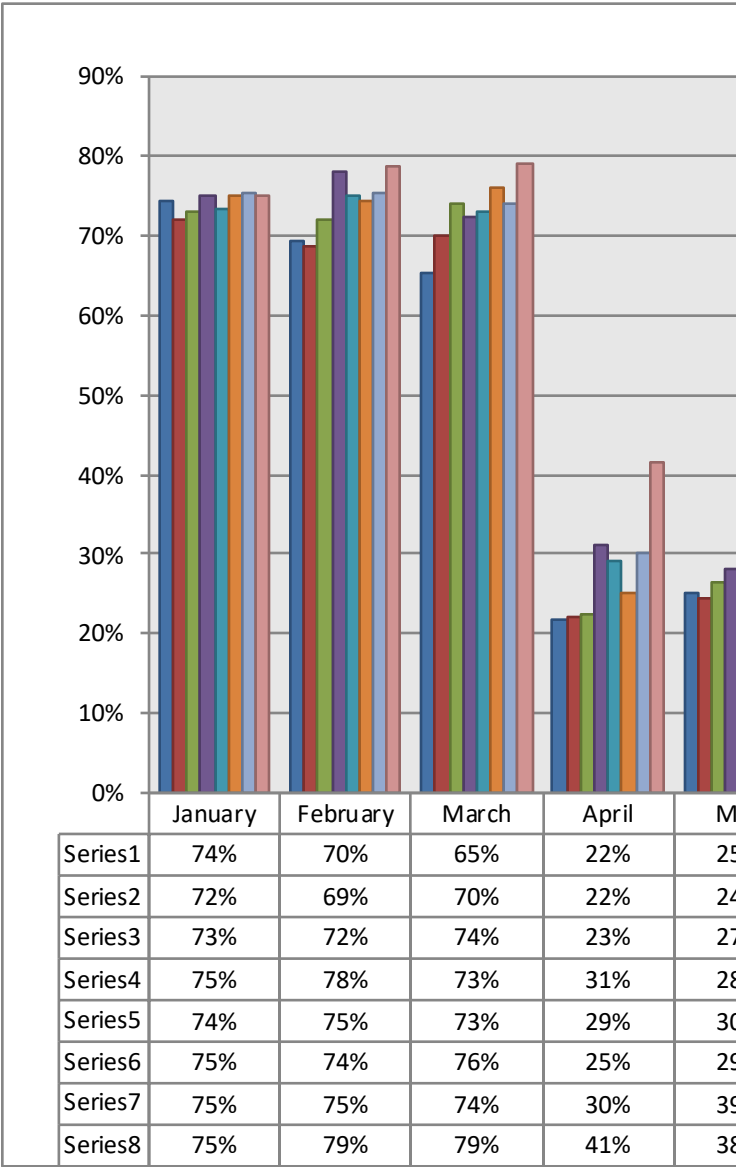
#NAME?

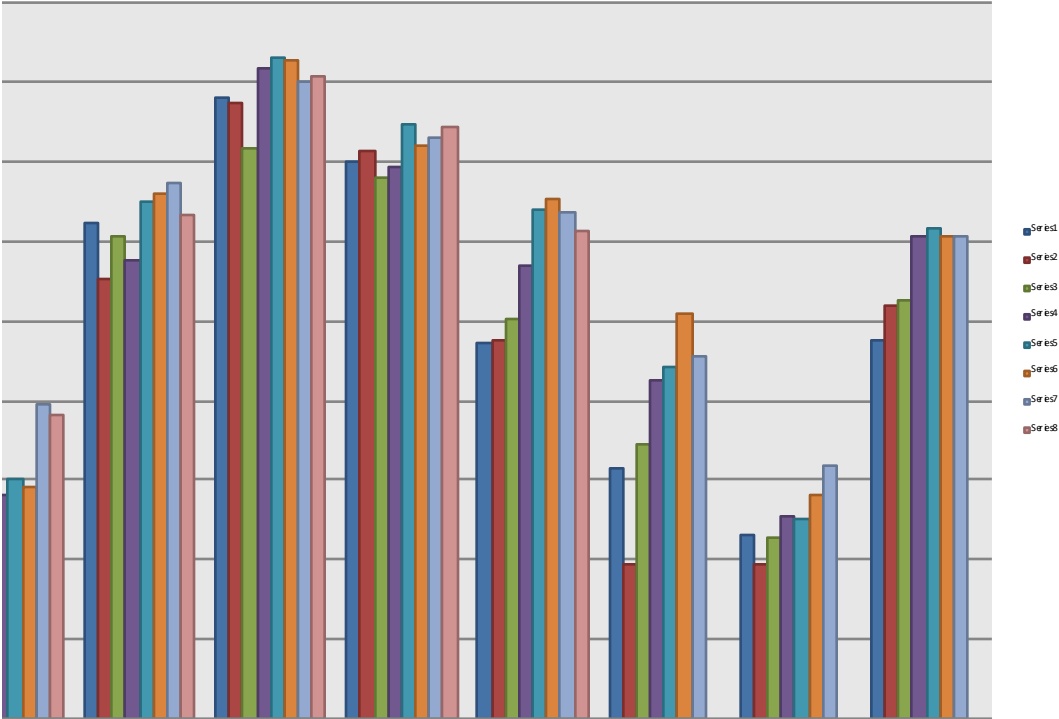
January	71%	74%	72%	73%	75%	74%	75%
February	69%	70%	69%	72%	78%	75%	74%
March	68%	65%	70%	74%	73%	73%	76%
April	26%	22%	22%	23%	31%	29%	25%
May	20%	25%	24%	27%	28%	30%	29%
June	53%	62%	55%	61%	58%	65%	66%
July	71%	78%	77%	72%	82%	83%	83%
August	64%	70%	71%	68%	69%	75%	72%
September	52%	47%	48%	50%	57%	64%	65%
October	33%	32%	19%	34%	43%	44%	51%
November	22%	23%	19%	23%	26%	25%	28%
December	56%	48%	52%	53%	61%	62%	61%



75%
75%
74%
30%
39%
68%
80%
73%
64%
45%
32%
61%

75%
79%
79%
41%
38%
63%
81%
75%
61%





lay	June	July	August	September	October	November	December
5%	62%	78%	70%	47%	32%	23%	48%
4%	55%	77%	71%	48%	19%	19%	52%
7%	61%	72%	68%	50%	34%	23%	53%
3%	58%	82%	69%	57%	43%	26%	61%
0%	65%	83%	75%	64%	44%	25%	62%
9%	66%	83%	72%	65%	51%	28%	61%
9%	68%	80%	73%	64%	45%	32%	61%
8%	63%	81%	75%	61%			

Occupancy Levels	1997	1998	1999	2000	2001
January	76%	78%	72%	71%	67%
February	90%	85%	77%	81%	76%
March	88%	85%	78%	83%	79%
April	48%	45%	33%	41%	39%
May	37%	38%	26%	36%	22%
June	56%	55%	59%	62%	58%
July	85%	84%	83%	81%	78%
August	80%	81%	80%	74%	71%
September	50%	63%	58%	59%	44%
October	37%	49%	40%	41%	32%
November	29%	31%	23%	32%	24%
December	67%	53%	54%	57%	48%
Average Year-Round	62%	62%	57%	60%	53%
Average (Dec.-Mar)	80%	79%	70%	72%	70%
Average (Jun-Sept)	68%	71%	70%	69%	63%

2002	2003	2004	2005	2006	2007	2008
70%	69%	74%	78%	80%	85%	86%
72%	77%	75%	80%	77%	84%	84%
76%	72%	76%	84%	80%	82%	83%
27%	25%	24%	29%	28%	29%	28%
21%	26%	19%	21%	23%	18%	23%
54%	55%	49%	55%	54%	59%	57%
71%	74%	72%	77%	76%	84%	82%
69%	73%	71%	70%	77%	78%	78%
44%	43%	49%	51%	54%	52%	51%
38%	24%	30%	29%	32%	37%	30%
28%	20%	29%	23%	30%	28%	24%
54%	52%	60%	61%	65%	63%	49%
53%	53%	52%	55%	56%	58%	56%
67%	68%	69%	76%	75%	79%	79%
60%	61%	60%	63%	65%	68%	67%

2009	2010
69%	68%
65%	66%
58%	60%
26%	22%
18%	
46%	
57%	
50%	
37%	
24%	
19%	
49%	
43%	
60%	61%
48%	