

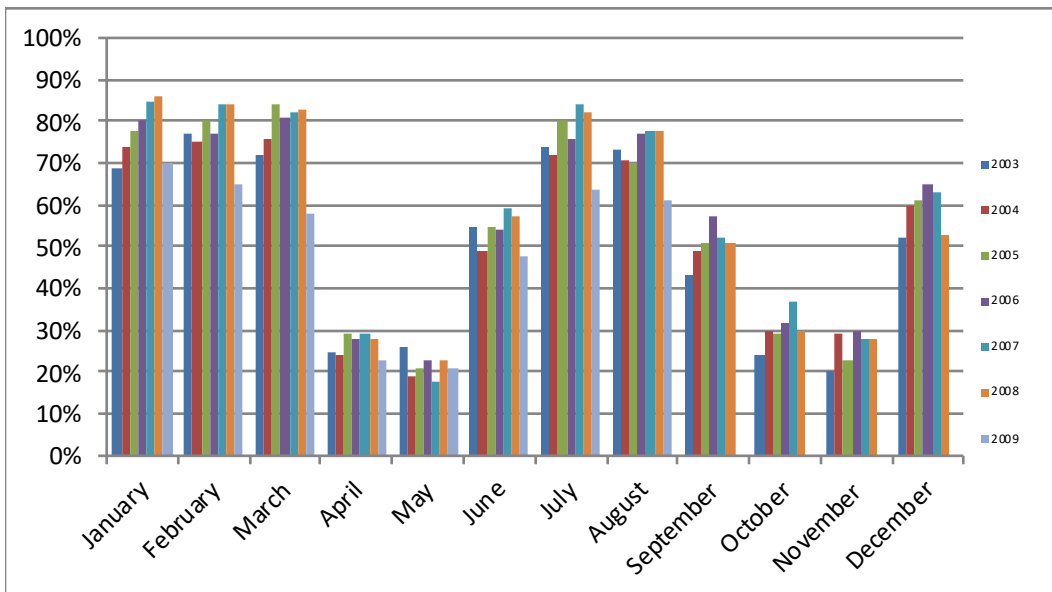
**Aspen Chamber Resort Association  
Historical Monthly Occupancy**

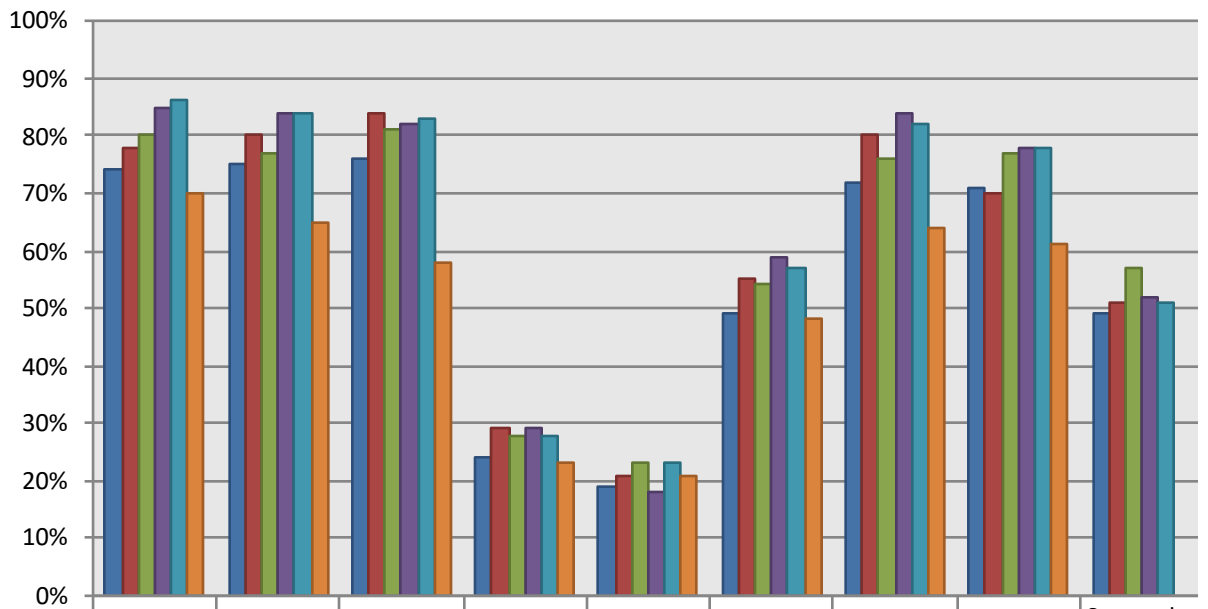
	1987	1988	1989	1990	1991	1992	1993	1994	1995	1996	2007	2008	2009	2010	2011	2012	2013	2014	2015	2016	2017	2018	2019
January	69%	74%	78%	80%	80%	69%	75%	74%	76%	73%	85%	86%	69%	68%	71%	74%	72%	73%	75%	74%	75%	75%	75%
February	74%	80%	86%	79%	74%	76%	78%	82%	76%	83%	84%	84%	65%	68%	69%	70%	69%	72%	78%	75%	74%	75%	79%
March	84%	90%	96%	80%	76%	84%	82%	89%	83%	84%	82%	83%	58%	60%	66%	65%	70%	74%	73%	73%	76%	74%	79%
April	25%	37%	29%	27%	31%	33%	19%	38%	38%	35%	29%	28%	26%	22%	26%	22%	22%	23%	31%	29%	25%	30%	41%
May	16%	18%	19%	15%	17%	18%	11%	24%	21%	38%	18%	23%	18%	20%	20%	25%	24%	27%	28%	30%	29%	39%	38%
June	36%	45%	45%	35%	47%	48%	41%	48%	55%	53%	59%	57%	46%	50%	53%	62%	55%	61%	58%	65%	66%	68%	63%
July	68%	74%	76%	70%	77%	77%	79%	70%	80%	84%	84%	82%	57%	72%	71%	78%	77%	72%	82%	83%	83%	80%	81%
August	74%	79%	75%	74%	78%	80%	77%	85%	85%	85%	78%	78%	50%	58%	64%	70%	71%	68%	69%	75%	72%	73%	
September	64%	33%	43%	43%	40%	49%	53%	54%	65%	60%	52%	51%	37%	45%	52%	47%	48%	50%	57%	64%	65%	64%	
October	20%	17%	18%	17%	20%	27%	32%	37%	33%	45%	37%	30%	24%	26%	33%	32%	19%	34%	43%	44%	51%	45%	
November	20%	19%	19%	19%	18%	18%	15%	34%	22%	35%	28%	24%	19%	19%	22%	23%	19%	23%	26%	25%	28%	32%	
December	55%	60%	59%	65%	54%	60%	60%	68%	61%	66%	63%	49%	49%	49%	56%	48%	52%	53%	61%	62%	61%	61%	
<b>AVERAGE</b>	50%	52%	54%	50%	50%	53%	52%	58%	58%	62%	58%	56%	43%	46%	50%	51%	50%	52%	57%	58%	59%	60%	
<b>Winter Avg.</b>	(Dec-March)							76%	76%	75%	79%	79%	60%	61%	64%	66%	65%	68%	69%	70%	72%	71%	
<b>Summer Avg.</b>	(June-Sept)							64%	71%	71%	68%	67%	48%	56%	60%	64%	63%	63%	66%	72%	72%	71%	

PLEASE NOTE THE FOLLOWING:  
 \*Occupancy numbers are not forecasts or projections; the ACRA is providing current reservations on the books to assist businesses in their staffing and inventory needs. It should be noted that last minute reservations can be made after the occupancy report is released which would increase the actual occupancy.

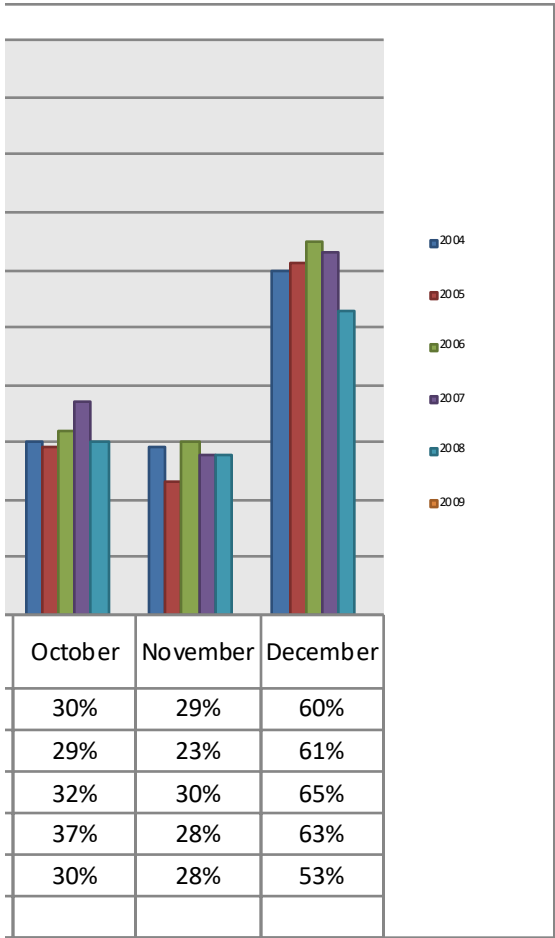
\*Occupancy numbers in RED are from the new reporting tool structure RRC Associates.

	<u>2003</u>	<u>2004</u>	<u>2005</u>	<u>2006</u>	<u>2007</u>	<u>2008</u>	<u>2009</u>
<b>January</b>	69%	74%	78%	80%	85%	86%	70%
<b>February</b>	77%	75%	80%	77%	84%	84%	65%
<b>March</b>	72%	76%	84%	81%	82%	83%	58%
<b>April</b>	25%	24%	29%	28%	29%	28%	23%
<b>May</b>	26%	19%	21%	23%	18%	23%	21%
<b>June</b>	55%	49%	55%	54%	59%	57%	48%
<b>July</b>	74%	72%	80%	76%	84%	82%	64%
<b>August</b>	73%	71%	70%	77%	78%	78%	61%
<b>September</b>	43%	49%	51%	57%	52%	51%	
<b>October</b>	24%	30%	29%	32%	37%	30%	
<b>November</b>	20%	29%	23%	30%	28%	28%	
<b>December</b>	52%	60%	61%	65%	63%	53%	





	January	February	March	April	May	June	July	August	September
2004	74%	75%	76%	24%	19%	49%	72%	71%	49%
2005	78%	80%	84%	29%	21%	55%	80%	70%	51%
2006	80%	77%	81%	28%	23%	54%	76%	77%	57%
2007	85%	84%	82%	29%	18%	59%	84%	78%	52%
2008	86%	84%	83%	28%	23%	57%	82%	78%	51%
2009	70%	65%	58%	23%	21%	48%	64%	61%	



<b>Occupancy Levels</b>	<b>1997</b>	<b>1998</b>	<b>1999</b>	<b>2000</b>	<b>2001</b>
January	76%	78%	72%	71%	67%
February	90%	85%	77%	81%	76%
March	88%	85%	78%	83%	79%
April	48%	45%	33%	41%	39%
May	37%	38%	26%	36%	22%
June	56%	55%	59%	62%	58%
July	85%	84%	83%	81%	78%
August	80%	81%	80%	74%	71%
September	50%	63%	58%	59%	44%
October	37%	49%	40%	41%	32%
November	29%	31%	23%	32%	24%
December	67%	53%	54%	57%	48%
<b>Average Year-Round</b>	<b>62%</b>	<b>62%</b>	<b>57%</b>	<b>60%</b>	<b>53%</b>
<b>Average (Dec.-Mar)</b>	<b>80%</b>	<b>79%</b>	<b>70%</b>	<b>72%</b>	<b>70%</b>
<b>Average (Jun-Sept)</b>	<b>68%</b>	<b>71%</b>	<b>70%</b>	<b>69%</b>	<b>63%</b>

2002	2003	2004	2005	2006	2007	2008
70%	69%	74%	78%	80%	85%	86%
72%	77%	75%	80%	77%	84%	84%
76%	72%	76%	84%	80%	82%	83%
27%	25%	24%	29%	28%	29%	28%
21%	26%	19%	21%	23%	18%	23%
54%	55%	49%	55%	54%	59%	57%
71%	74%	72%	77%	76%	84%	82%
69%	73%	71%	70%	77%	78%	78%
44%	43%	49%	51%	54%	52%	51%
38%	24%	30%	29%	32%	37%	30%
28%	20%	29%	23%	30%	28%	24%
54%	52%	60%	61%	65%	63%	49%
53%	53%	52%	55%	56%	58%	56%
67%	68%	69%	76%	75%	79%	79%
60%	61%	60%	63%	65%	68%	67%

2009	2010
69%	68%
65%	66%
58%	60%
26%	22%
18%	
46%	
57%	
50%	
37%	
24%	
19%	
49%	
43%	
60%	61%
48%	